



THE UK'S LARGEST INDEPENDENT LIFT CONTROL PANEL MANUFACTURER

PB 35 PUSH BUTTON

ADVANTAGES

- LED standard current 20mA (13-27mA / min-max)
- 1 N/O contact as standard
- Low profile 24mm (inc. connectors)
- Plug & Play connectors complete with terminal blocks
- 24v DC standard voltage
- Tactile and Braille standard finish
- Equality Act 2010 compliant*
- 10 million mechanical life-span operations
- Meets EN 81-70 standards
- Programmable for up to 7 colour combinations

RANGE FEATURES

- Full common range of numbers in stock and supporting functions available in a number of attractive finishes. Any LED configuration can be accommodated at short notice, if required.
- Programmable colours available: Red, Green, Yellow, Blue, Magenta, Cyan, White



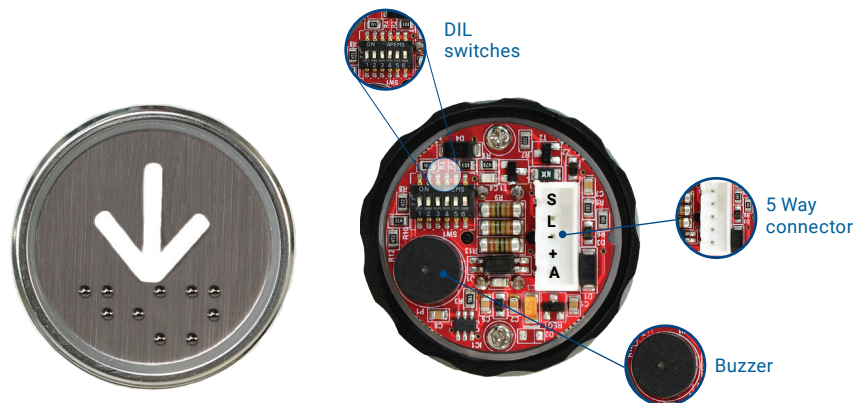
PRODUCT CODES

- PB 35 24V
- PB 35Y 12V

PART NUMBERS

- PB35-0 • PB35-UP
- PB35-1 • PB35X-G
- PB35-D0 • PB35X-0

A new Lester Controls 35mm* push button range, complete with switchable EN Buzz facility, Plug & Play connectors for easy on-site installation and site programmable colour combinations.



Initially available in Black titanium finish with Braille. Alternative Pressel options to follow. There will be a matching range of keyswitches in the near future.

STANDARD STOCK CONFIGURATION

White full illumination (24v) / White half illumination (12v)

PLUG & PLAY CONNECTORS

No extra wiring on-site is required as the button comes complete with the circuit already incorporated.

SURFACE GRAPHICS

*Current push range 33mm

Head Office
59 Imperial Way
Croydon Surrey CR0 4RR
T: 020 8288 0668

Midlands Office
Units 1-4 Wycliffe Industrial
Park Leicester Road Lutterworth
Leicestershire LE17 4HG
T: 01455 204980

Glasgow Office
4 Lonmay Place, Panorama Business
Park, Glasgow G33 4ER
T: 0141 771 6171

PB 35 PUSH BUTTON

QUICK SETUP GUIDE | ISSUE: 3 | DATE: 10/7/2023

Limitations

- Not suitable for 110v Circuit
- Switch is negative polarity only

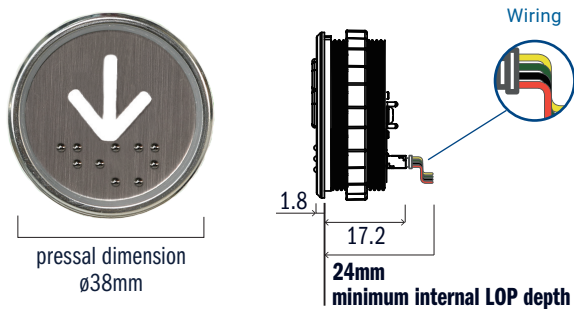
GENERAL

- Installation location: On the car operation panel or hall station
- Function: For elevator calling for hall position or car position

OPERATION

- Fix the units on the car operation panel or hall station
- Follow the wiring diagram to connect the wires
- Check the short circuit between the wires multimeter
- Power on and press the button to confirm it works normally
- The installation is finished after the above procedure

DIMENSION DIAGRAM



TECHNICAL SPECIFICATION

Pre-Check Information

Push Button and 5 wire connector

Push Button Overview

1. Temperature Range

0 °C to + 70 °C

2. Voltage Range

18-24V DC typ. (16-28V DC min/max)

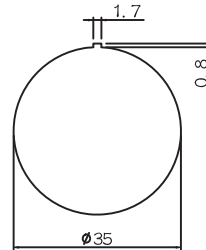
3. Current

Standby with Half Illumination
9mA @ 24V DC & 12VDC

Call Accepted Illumination

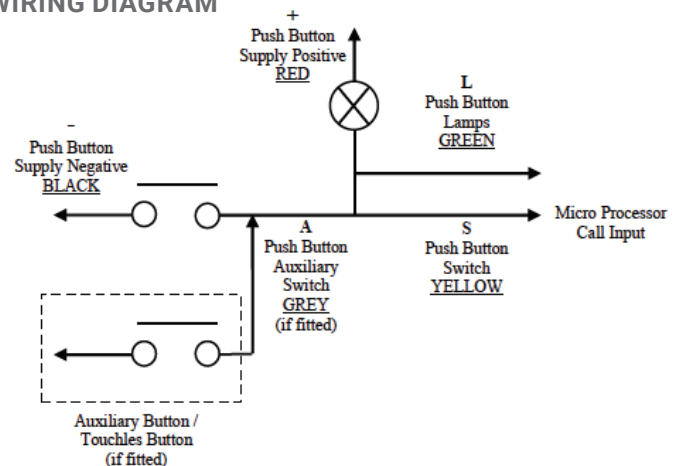
Max current@24V-DC (45mA LED + 20mA Buzzer) = 65mA

STUD OPENING DIAGRAM



- Plastic symbol slice (Transparent brown PP)
- 1T Hairline stainless steel
- Hairline stainless steel board
- Fixed cover (ABS)
- Connector
- Bushing (raised 5mm) for exit door

WIRING DIAGRAM



Key:

5 Way Connector Connections

S = Switch = YELLOW

L = Lamps = GREEN

- = Supply (-) = BLACK

+ = Supply (+) = RED

A = Auxiliary Switch = GREY (if fitted)

DIL SWITCHES (1 is to the LEFT)

1 = Call Accept Buzzer

ON = Full Volume

OFF = Half Volume

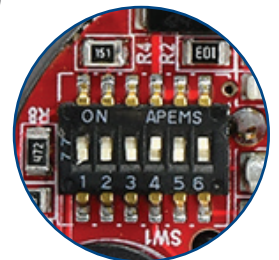
2 = Call Accept Buzzer ON / OFF

3 = SPARE

4 = BLUE (Call Acceptance)

5 = RED (Call Acceptance)

6 = GREEN (Call Acceptance)



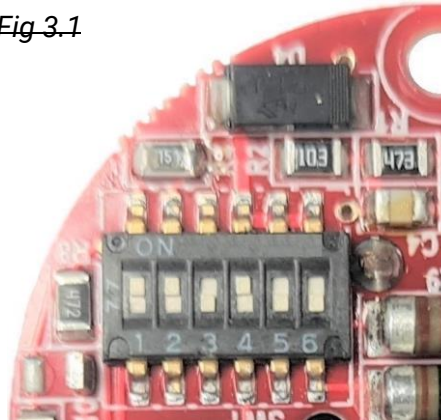
LEDs

A = Half Illumination (White)

B = Call Accepted indication

DIL Switch Settings

Fig 3.1



DIL SWITCHES (1 is to the LEFT)

1 = Call Accept Buzzer

ON = Full Volume, OFF = Half Volume.

2 = Call Accept Buzzer ON / OFF

3 = SPARE

4 = BLUE (Call Acceptance)

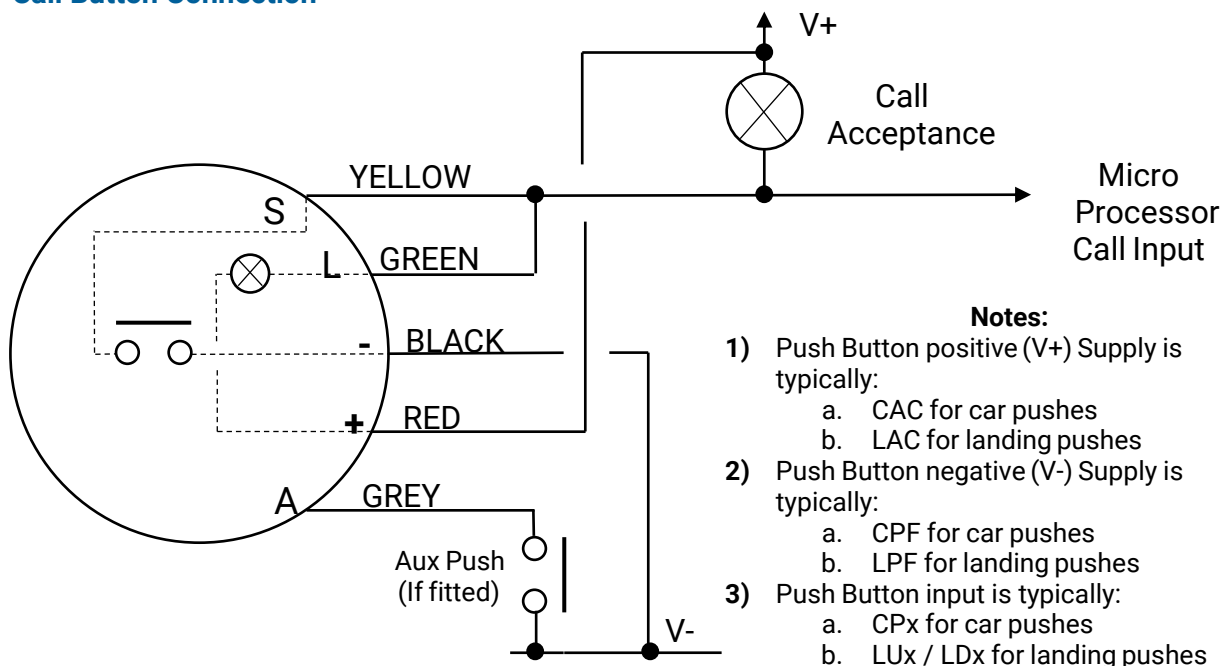
5 = RED (Call

Acceptance) 6 = GREEN

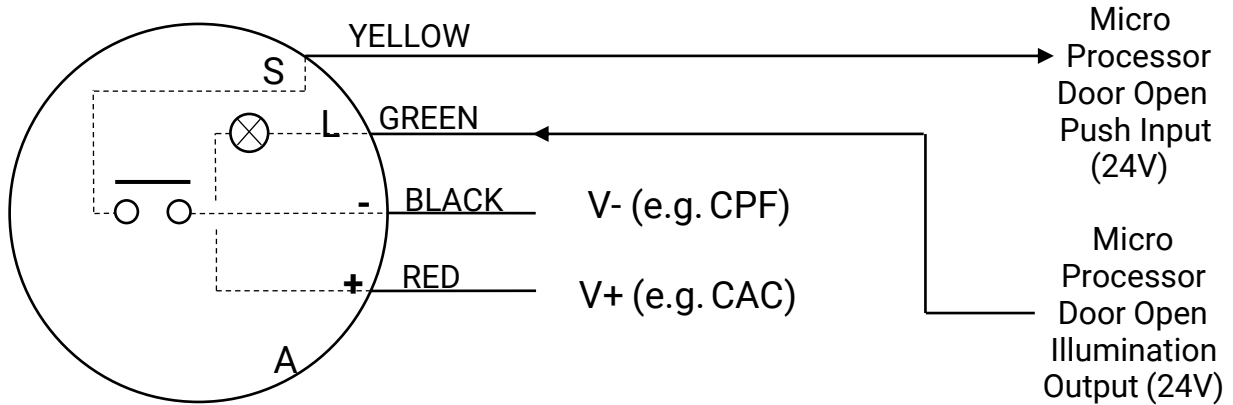
(Call Acceptance)

Colour Combinations	<u>BLUE (4)</u>	<u>GREEN (6)</u>	<u>RED (5)</u>	<u>RESULT</u>
	OFF	OFF	OFF	NO LED
	OFF	OFF	ON	RED
	OFF	ON	OFF	GREEN
	OFF	ON	ON	YELLOW
	ON	OFF	OFF	BLUE
	ON	OFF	ON	MAGENTA
	ON	ON	OFF	CYAN
	ON	ON	ON	WHITE

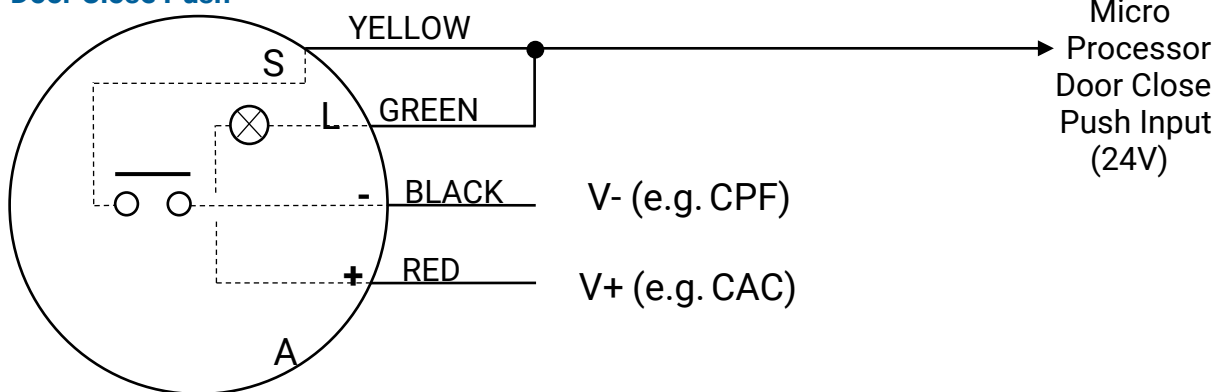
Call Button Connection



Door Open Push / Door Open Push Illumination



Door Close Push



Alarm Button Connection (12V or 24V)

