



## THE UK'S LARGEST INDEPENDENT LIFT CONTROL PANEL MANUFACTURER

# PB 37 CAT 2 PUSH BUTTON

### ADVANTAGES

- LED standard current 60mA (40-80mA / min-max)
- 1 N/O contact as standard
- Low profile 23mm (inc. connectors)
- Plug & Play connectors complete with terminal blocks
- 24v DC standard voltage
- Tactile and Braille standard finish
- Equality Act 2010 compliant\*
- 1m mechanical life-span operations
- Meets Impact Test of EN 81-70 CAT2 standards

### RANGE FEATURES

- Full common range of numbers in stock and supporting functions available in a number of attractive finishes. There is a matching range of keyswitches, rocker switches and indicators.
- Any LED configuration can be accommodated at short notice, if required.

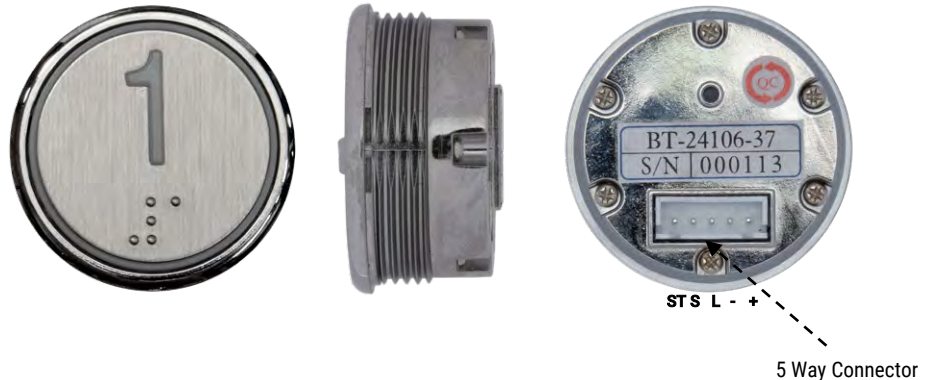
### PRODUCT CODES

- PB37  
24v

### PART NUMBERS

- PB37-R0, R1, R2,...
- PB37-B0, B1, B2,...
- PB37-RD0, RDC
- PB37-RUP, RDN
- PB37-GG, GO
- PB37-Y Alarm

The new high-quality Lester Controls 37mm push button range, fully vandal-resistant, comes complete with EN Buzz facility and Plug & Play connectors for easy on-site installation.



**PB 37 CAT 2** Black titanium finish with Braille

### STANDARD STOCK CONFIGURATION

Red (Full Illumination)

White (Half Illumination) available in 24v

### SURFACE GRAPHICS

Symbols: Door Close, Door Open, Alarm, Up and Down

Other options are available upon request.

**Head Office**  
59 Imperial Way  
Croydon Surrey CR0 4RR  
T: 020 8288 0668

**Midlands Office**  
Units 1-4 Wycliffe Industrial  
Park Leicester Road Lutterworth  
Leicestershire LE17 4HG  
T: 01455 204980

**Glasgow Office**  
4 Lonmay Place, Panorama Business  
Park, Glasgow G33 4ER  
T: 0141 771 6171

# PB 37 CAT 2 PUSH BUTTON

## QUICK SETUP GUIDE | ISSUE: 2 | DATE: 10/7/2023

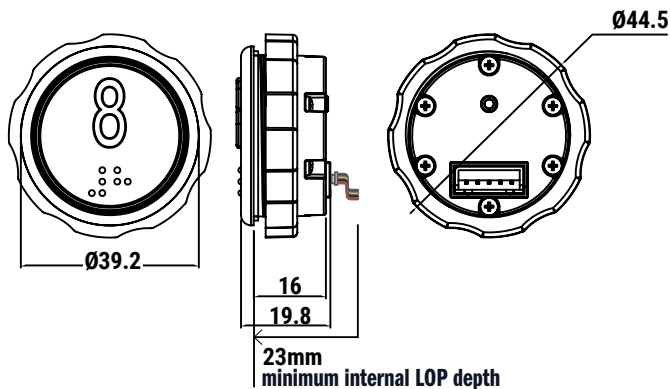
### GENERAL

- Installation location: On the car operation panel or hall station
- Function: For elevator calling for hall position or car position

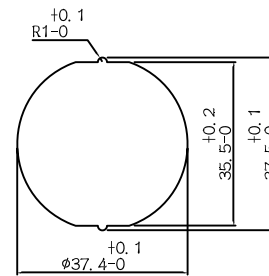
### OPERATION

- Fix the units on the car operation panel or hall station
- Follow the wiring diagram to connect the wires
- Check the short circuit between the wires multimeter
- Power on and press the button to confirm it works normally
- The installation is finished after the above procedure

### DIMENSION DIAGRAM

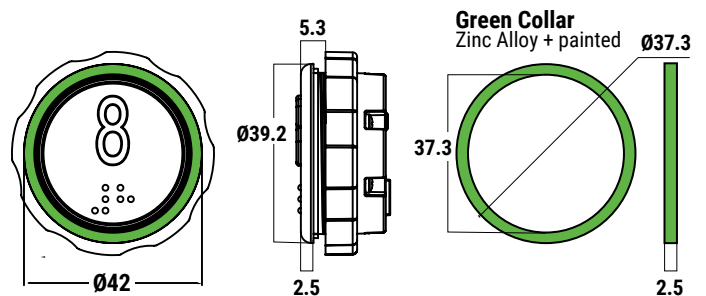


### STUD OPENING DIAGRAM



- Plastic symbol slice (Opaque)
- 0.8T Hairline stainless steel
- Hairline stainless steel board
- Fixed cover (ABS)
- Connector
- Collar (raised 5mm) for exit floor

### GREEN EXIT BUTTON DIMENSION DIAGRAM



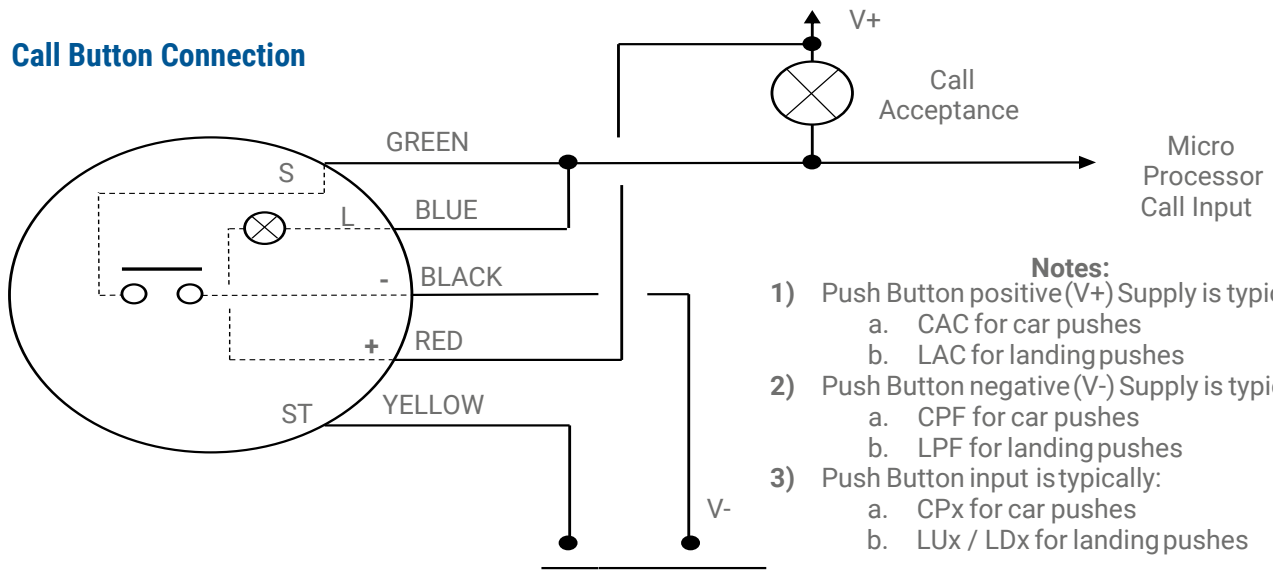
### TECHNICAL SPECIFICATION

Standard Voltage	DC24v
Voltage Range	DC18v ~ DC30v
Standby Consumption	Power 0.01 W
	Current 4.4mA
In-operation Consumption	Standard voltage 59.6mA
	Lowest voltage 41.5mA
	Highest voltage 78.9mA
Push Strength	700g ± 100g
Life Span	1 million
Display Type	LED
Colour	In standby: White
	In operation: Red
Weight	32g

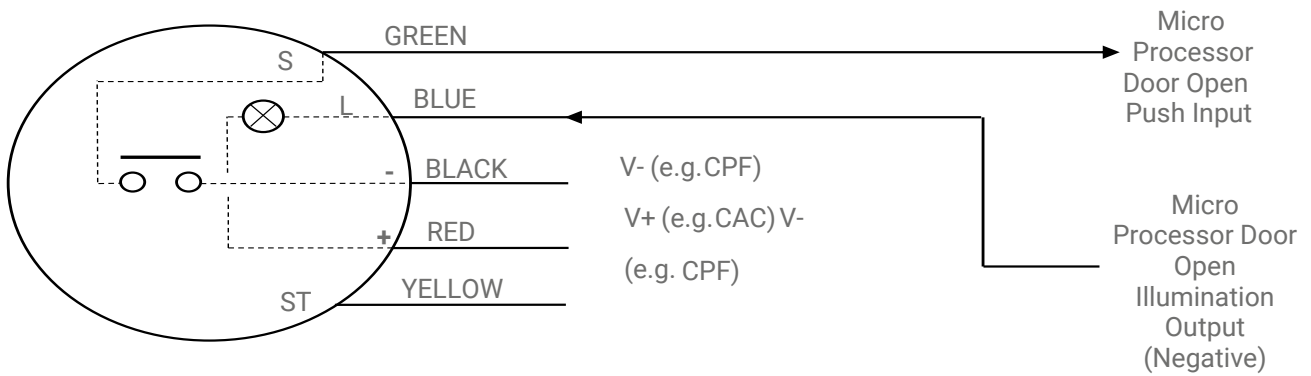
### Limitations

- Not suitable for 110v Circuit
- Switch is negative polarity only

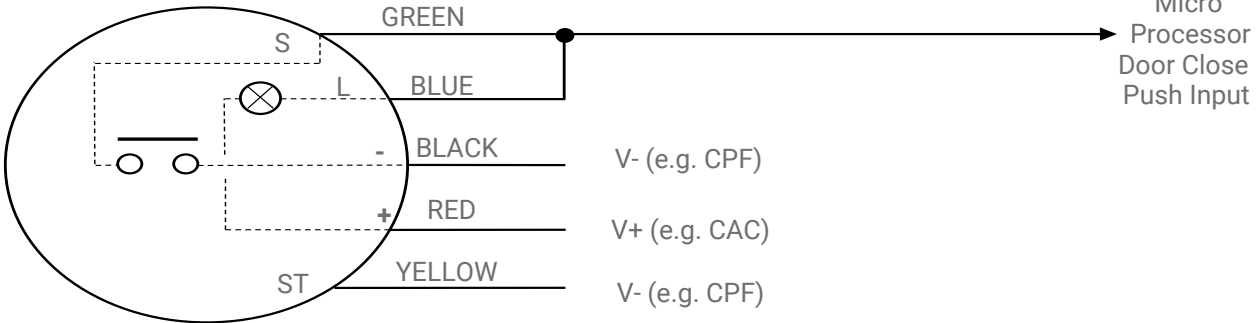
### Call Button Connection



### Door Open Push / Door Open Push Illumination (Negative)



### Door Close Push



### Alarm Button Connection (12V or 24V)

